

THE CORPORATION OF
TOWNSHIP OF WHITEWATER REGION

BY-LAW NUMBER 13-02-593

A By-law to amend By-law Number 98-13 of the former Corporation of the Township of Westmeath as amended.

PURSUANT TO SECTION 34 OF THE PLANNING ACT, THE TOWNSHIP OF WHITEWATER REGION HEREBY ENACTS AS FOLLOWS:

1. THAT By-law Number 98-13, as amended, be and the same is hereby further amended as follows:
 - (a) By adding the following new subsection 16.3(a) Community Facility-Exception One (CF-E1) immediately after subsection **Section 16.3 – EXCEPTION ZONES**:
 - “(a) Community Facility-Exception One (CF-E1)

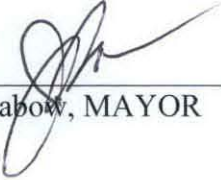
Notwithstanding subsections 16.2(d) and (f), or any other provision of this By-law to the contrary, for those lands located in part of Lots 38, 39, 51 and 52, and Lot 50, Plan 60, geographic Village of Westmeath, and delineated as Community Facility-Exception One (CF-E1), as shown on Schedule “A” to this By-law, the following provisions shall apply to a second portable classroom:

(i)	Interior Side Yard Depth (minimum)	1.2 metres
(ii)	Rear Yard Depth (minimum)	3.0 metres

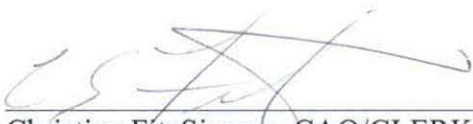
All other provisions of this By-law shall apply.”
 - (b) Schedule “A” (Map 3) to By-law 98-13 is amended by rezoning the lands described as part Lots 38, 39, 51 and 52, and Lot 50, Plan 60 from Community Facility (CF) to Community Facility-Exception One (CF-E1), as shown on Schedule “A” attached hereto.
2. THAT save as aforesaid all other provisions of By-law 98-13 as amended, shall be complied with.
3. This by-law shall come into force and take effect on the day of final passing thereof.

All By-Laws or parts of By-Laws previously passed that are inconsistent with the provisions of By-Law 13-02-593 are hereby repealed.

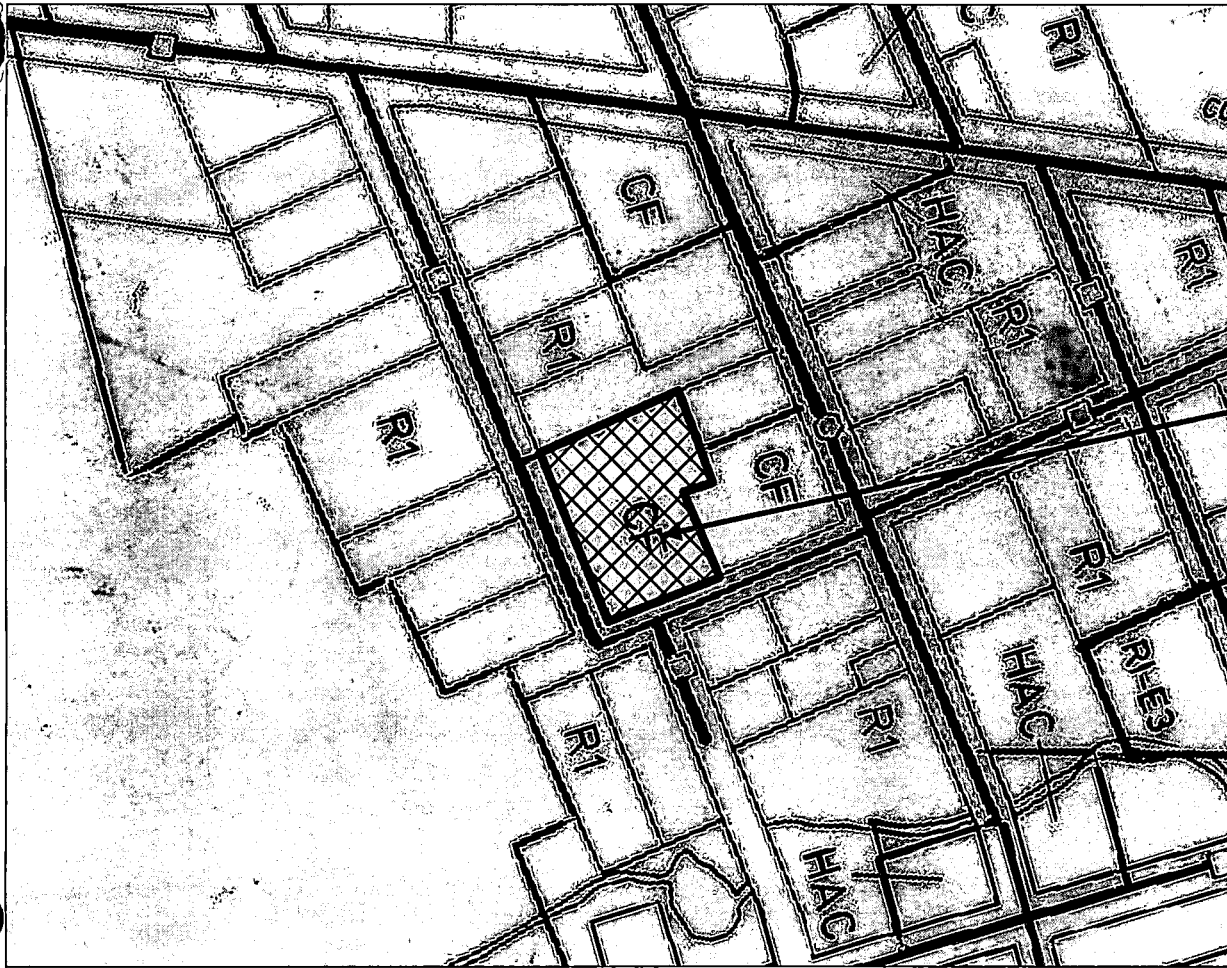
Passed this 6th day of February, 2013.



Jim Labow, MAYOR



Christine FitzSimons, CAO/CLERK



From CF
to CF-E1




1:2,400

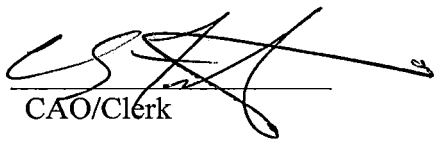
**CORPORATION OF THE
TOWNSHIP OF WHITEWATER REGION**

This is Schedule "A" to By-law Number 13-02-593
Passed the 6th day of February 2013.

Signatures of Signing Officers:



Mayor



CAO/Clerk

LEGEND

R1

Residential One

-E1

Exception Zone

CF

Community Facility

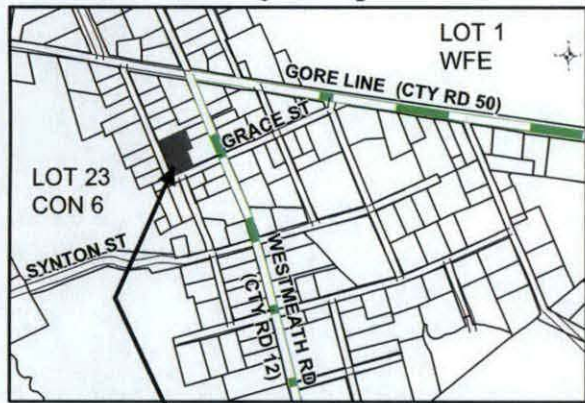


**Area affected by this Amendment
From CF to CF-E1**

HAC

Hamlet Commercial

Township of Whitewater Region Key Map



Location of Amendment